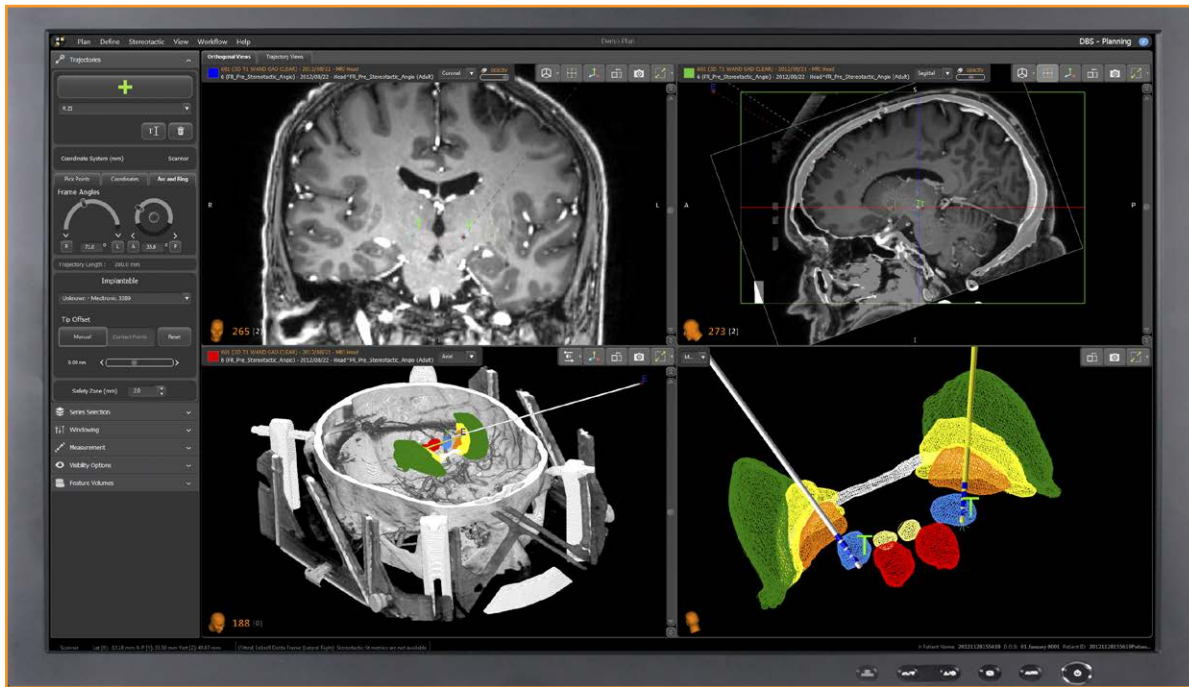


neuroinspire™ surgical planning software – key features



About *neuroinspire* software

The *neuroinspire* surgical planning software allows planning of targets and trajectories for stereotactic neurosurgery. *neuroinspire* can be provided on a laptop or desktop computer, enabling planning to be carried out from the office, home, while on the move, or in collaboration with colleagues.

Key features

- Load DICOM (classic and Enhanced) and IMA formatted CT and MR series including angiographs to help to locate and avoid key blood vessels during your surgical planning.
- Automatically fuse both CT and MR images to benefit from the lower distortion of CT with the higher contrast of MR.
- Default windowing setting for viewing bone in CT series.
- Place targets and trajectories together with a safety zone to determine whether a trajectory passes too close to key anatomy.
- Assign a virtual standard electrode to a trajectory and align a particular contact to the trajectory's target point.
- Visualise your planned trajectory, rotate for an all around view and redefine entry and target points.
- Reconstruct images into the AC-PC plane and turn any planning view from a set of 2D slices into a 3D volume.
- Automatic detection of Elekta Leksell Stereotactic System® CT indicator markers.
- Choose the stereotactic arc configuration that best suits the surgical plan and determine whether a trajectory is suitable for the current arc configuration.

- Use of livewire segmentation allows quick and intuitive delineation of anatomical features.
- 3D meshing of user-defined complex/concave regions of interest.
- Auto-recovery of plans to minimise data loss in the event of a power failure.

Additional modules

- **Region of interest based automatic registration** - Limit the automatic series registration method to using a definable region of interest of the series.
- **PACS Connectivity** - Query and retrieve patient data directly from the hospital network.
- **Cerefy® Electronic Clinical Brain Atlas** - Display target points on the 2D Cerefy Electronic Clinical Brain Atlas, derived from Schaltenbrand G, Wahren W. Atlas for Stereotaxy of the Human Brain.

Support and maintenance

Full training and support are provided to ensure seamless integration of the software into your clinical workflows.

Regulatory approvals

neuroinspire surgical planning software is a CE marked and FDA cleared medical device and may only be used in countries where the product is approved for sale.

Renishaw Healthcare Inc.
1001 Wesemann Drive,
West Dundee, Illinois,
United States,
IL 60118

T +1 847 286 9953
F +1 847 286 9974
E usa@renishaw.com
www.renishaw.com/neuro

RENISHAW 
apply innovation™

Planning workflow

Planning

neuroinspire can automatically find and fit the Elekta Leksell stereotactic coordinate system. Whether fitting the frame to the patient prior to planning, or post-planning prior to surgery, *neuroinspire* is flexible enough to support both workflows.

Co-registration

Co-registration of patient imagery facilitates downstream multi-modality planning. *neuroinspire* provides four methods of co-registration, ranging from automatic to manual. The resulting co-registration can be visually verified using a checkerboard pattern, or by varying the opacity between the images.

AC-PC

Optionally, the AC-PC coordinate system can be defined in order to facilitate functional planning.

Trajectory planning

Trajectories are defined through the use of a target and entry point. Optionally, a virtual representation of the implantable device or tool can be added to each trajectory so that targeting can be conducted knowing the size of the instrumentation. When using a DBS electrode, this has the advantage of targeting to specific contact positions.

The path that the trajectory takes through the brain can be checked using reconstructed surgeon-eye and trajectory views. A safety corridor can be set around each trajectory so that it can be determined if the trajectory passes too close to key anatomy.

Reporting

neuroinspire can produce an electronic summary of the surgical plan in Adobe® Acrobat® PDF format. This summary lists all of the planned trajectories including their angles and target positions in stereotactic space, patient data and implantable device types.

Robotic procedure

neuroinspire can integrate with *neuromate*® stereotactic robot for consistent, rapid and precise targeting during stereotactic procedures.

Trajectory verification

Peri or post operative imagery can be loaded into *neuroinspire* and co-registered against the pre-operative plan in order to verify the delivered position of each trajectory against its planned position.

RENISHAW® and the probe emblem used in the Renishaw logo are registered trade marks of Renishaw plc in the UK and other countries.

apply innovation is a trademark of Renishaw plc.

neuroinspire™ is a trademark of Renishaw plc.

neuromate® is a registered trademark of Renishaw mayfield Sarl.

All other brand names and product names used in this document are trade names, trade marks or registered trademarks of their respective owners.

Please note that not all Renishaw products, their fields of application, relative accessories or combination thereof, are available in all countries. Please contact us about which options are available in your area.

For worldwide contact details, visit www.renishaw.com/contact

RENISHAW HAS MADE CONSIDERABLE EFFORTS TO ENSURE THE CONTENT OF THIS DOCUMENT IS CORRECT AT THE DATE OF PUBLICATION BUT MAKES NO WARRANTIES OR REPRESENTATIONS REGARDING THE CONTENT. RENISHAW EXCLUDES LIABILITY, HOWSOEVER ARISING, FOR ANY INACCURACIES IN THIS DOCUMENT.

